

**KENDALL COUNTY**

**Fast-Growth County**

Counties over 10,000 from 2010-2020



**11th**  
Statewide



**31st**  
Nationwide

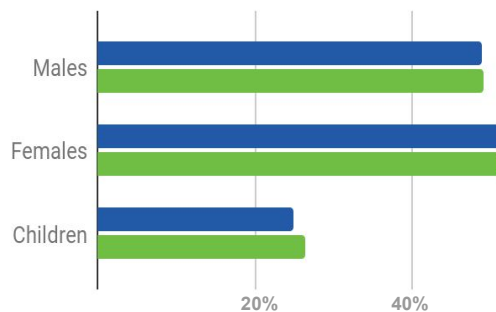
**POPULATION**

**49,027**

Kendall County

**21,807**

Boerne



**99,571** Primary Trade Area Population

**GROWTH**



Population Growth 2011 to 2020

**39%** **70%**

Projected Growth 2021 to 2026

**21%** **24%**

**TAX RATE** Per \$100

County **.4127**  
 City **.4720**  
 Boerne ISD **1.252**  
 Comfort ISD **1.252**

**HOUSING**



Median Home Sales Price

**\$498,498**  
**\$405,000**

**INCOME**



Median Household Income

**\$90,403**  
**\$79,040**

**PEOPLE**



Median Age

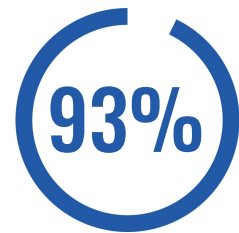
Kendall County **42 years**  
 Boerne **38 years**

**EDUCATION**

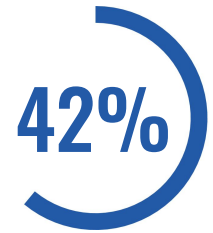


**142,000+**

college students from over 25 higher learning institutions within 50 miles of Boerne

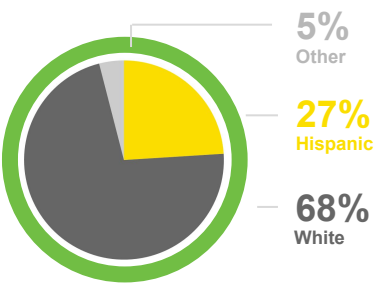
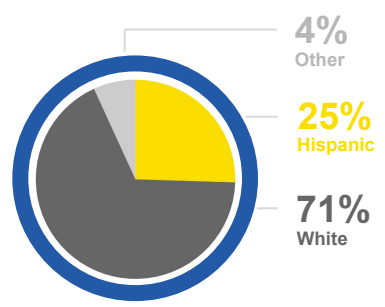


**93%**  
 HS Diploma or higher  
 94% in Boerne



**42%**  
 Bachelor's Degree or higher  
 43% in Boerne

**DEMOGRAPHICS**



**MORE REASONS TO CHOOSE BOERNE/KENDALL COUNTY**

**FamilyCircle**

Best Town for Families

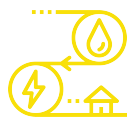
**NICHE**

BISD: Best School Districts in America, Top 4%  
 Best Places to Live

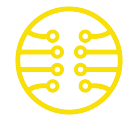
**COUNTYLIVING** magazine

One of the Best Small Town Main Streets in America

**RESOURCES**



**Sustainable Energy & Water Supply Solutions**



**Gigabit, Fully Fiber Optic City**

Visit our website to learn more about our complimentary site selection services and why there are boundless opportunities in Boerne and Kendall County. [www.bkcedc.com](http://www.bkcedc.com)