

KENDALL COUNTY

Fast-Growth County

Counties over 10,000 from 2010-2018



**3rd
Statewide**



**7th
Nationwide**

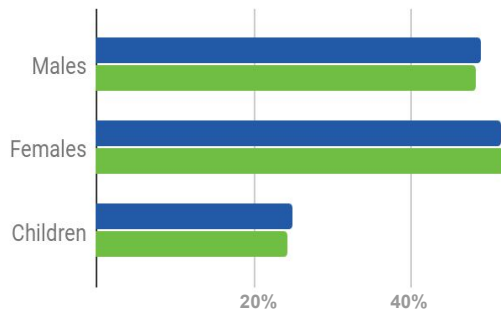
POPULATION

45,508

Kendall County

17,300

Boerne



94,460 Primary Trade Area Population

GROWTH



Population Growth 2011 to 2017

27% **44%**

Projected Growth 2018 to 2023

24% **23%**

TAX RATE Per \$100

County **.4127**
 City **.4720**
 Boerne ISD **1.354**
 Comfort ISD **1.230**

HOUSING



Median Home Sales Price

\$354,899
\$285,000

INCOME



Median Household Income

\$84,106
\$71,448

PEOPLE



Median Age

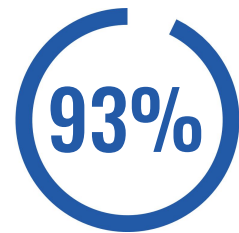
Kendall County **42 years**
 Boerne **38 years**

EDUCATION

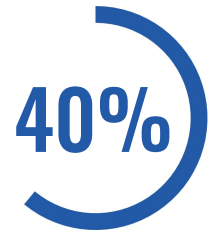


147,560

college students from over 25 higher learning institutions within 50 miles of Boerne

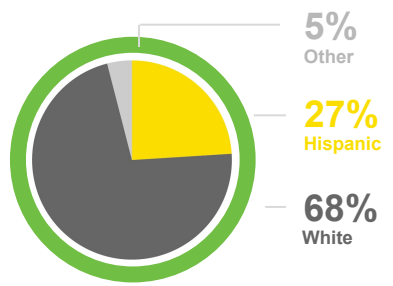
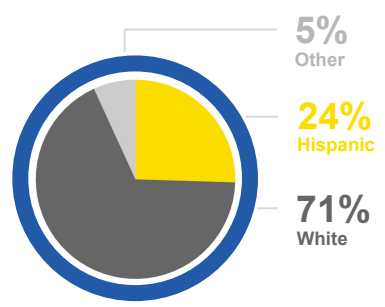


HS Diploma or higher
91% in Boerne



Bachelor's Degree or higher
39% in Boerne

DEMOGRAPHICS



MORE REASONS TO CHOOSE BOERNE/KENDALL COUNTY



Best Town for Families

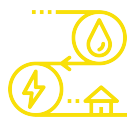


BISD: Best School Districts in America, Top 2%
 Best Places to Live

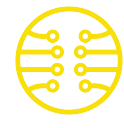


One of the Best Small Town Main Streets in America

RESOURCES



Sustainable Energy & Water Supply Solutions



Gigabit, Fully Fiber Optic City

Visit our website to learn more about our complimentary site selection services and why there are boundless opportunities in Boerne and Kendall County. www.bkcedc.com